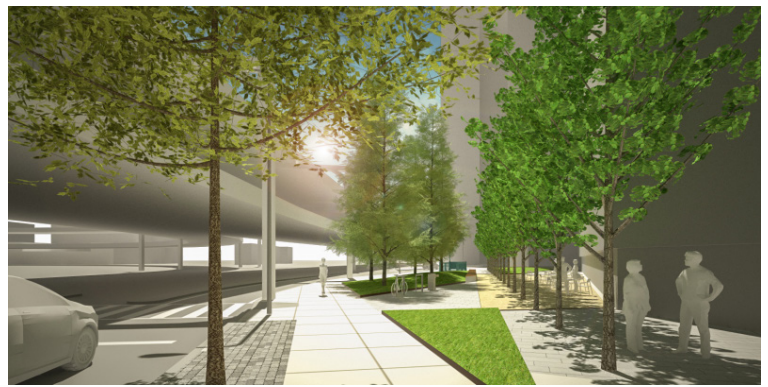
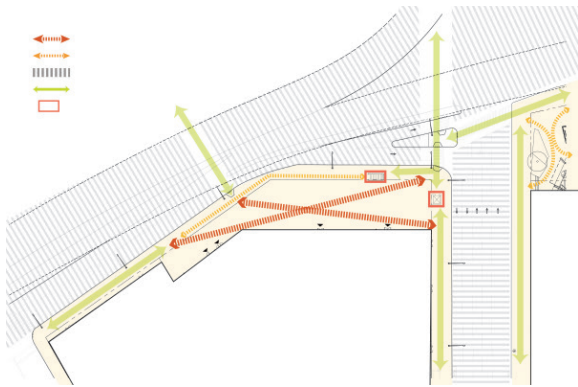


GOTHAM PLAZA





PLAZA CONCEPT DESIGN STUDY
DISTRICT OPEN SPACE REVITALIZATION
QUEENS, NEW YORK

As one of NYC’s Department of City Planning’s designated Special Mix-Use Districts, HMWhite’s park plaza conceptual design study demonstrates how quality public open space evolves into a safe neighborhood connector and social activating destination. The site is singularly characterized as a hub for public and private transit facilities - devoid of any humanistic qualities. Overcoming the overbearing train trestle presence and accommodating safe passage to and through the plaza commanded the primary design approach. Large planted zones emerged as trestle buffering mechanisms, circulation navigators and landscape character building space-makers to create a “there – there.” Each existing channeled crosswalk location and their limited destination choices reveal plaza “desire lines.” Limited available routes’ establish direct and clear passages that aim users to the only available crosswalks and sidewalks. Routes also orient pedestrian to ground floor retail activities fronting onto the plaza. Such pleasant discoveries are embellished by a dense planted framework, which improves spatial experiences, human comfort levels, elevate the senses and ultimately invites pauses and curious lingering. Quality of surface treatments, dappled shade, evening lighting ambience and oversized custom seating will collectively attract residents and visitors to congregate and positively interact. A community haven is established as a transformational public space design shift where city’s inhabitants’ needs are fulfilled and quality of civic infrastructure is upheld and appreciably enhanced.

PROJECT FEATURES

- 11,750 SF public space
- 58% planted landscape zones
- 45% permeable pavements
- Rain water harvesting and re-use
- 115 LF of custom designed seating
- Retail food court dining
- Movable furnishings
- Ginkgo “colonnade”
- Metasequoia groves
- Integrated lighting

COMPLETION

2019

COST

\$4M estimated

CLIENT

Confidential

DESIGN TEAM

- Landscape Architect: HMWhite
- Architect: MdeAS Architects
- Program Architect: SITU STUDIO
- Structural Engineer: WSP
- Civil Engineer: Philip Habib & Associates
- MEP Engineer: Jaros, Baum & Bolles
- Soils Consultant: Mueser Rutledge
- Lighting Designer: Kugler Ning Lighting Design
- Environmental Engineer: Tene Environmental
- Construction Manager: New Line Structures

