

# BROOKLYN BOTANIC GARDEN







1 Subtle and dramatic grade transitions accentuate the hillside’s topographic presence through pathway extensions and linkages, and as series of garden terraces and event plazas 2 Native botanic collections are organized in bold drifts, from upland to lowland typologies, and establish a resilient design structure 3 At the base of the berm, the entrance plaza rain gardens emerge as an educational garden while also providing infiltration and ground water recharge

**BROOKLYN BOTANIC GARDEN VISITOR CENTER**

LIVING ROOF + LANDSCAPE  
BROOKLYN, NEW YORK

HMWhite’s living roof and 3 acre landscape design integrates a new Visitor Center building design as the Brooklyn Botanic Garden’s (BBG) new gateway – a visionary public interface where City and Garden meet. With the building’s sinuous form as an extension of the Garden’s hillside, the landscape design fuses with structure, mystifying and blurring its actual intersection.

The landscape design’s integration of the site’s ecological engineering and horticultural design offers a new pedagogical paradigm with BBG’s first high-performance botanical exhibit.

In close collaboration with the building architect and civil engineer, HMWhite integrated a holistic biologically based storm water management strategy as the basis for the project’s resilient site and landscape design - comprised of a series of landscape systems - living roof, bio-swales, infiltration basins and artful rainwater garden designs. More than 100 new plant species were researched, specified, sourced and designed for each of the project’s landscape systems and horticultural features – vastly expanding BBG’s botanic exhibit offerings.

Fusing ecological engineering technology with sustainable and artistic landscape and horticultural design, this LEED Gold certified project and landscape design demonstrates this botanic institution’s commitment to environmental stewardship and conservation. HMWhite’s high performance landscape design and the project’s extensive native plant exhibit will dutifully serve the Garden’s next 100 years of public service and education.

**PROJECT FEATURES**

- Entry plaza and event terrace rain gardens
- Native plant communities
- High-performance ecology
- Bio-infiltration basins, swales and rain gardens
- Soil reclamation and remediation
- Diverse seasonal interest planting design
- 10,000 SF wildflower and prairie grass green roof

**COMPLETION**

2012

**COST**

\$28 million

**CLIENT**

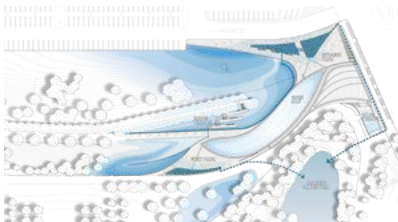
Brooklyn Botanic Garden

**DESIGN TEAM**

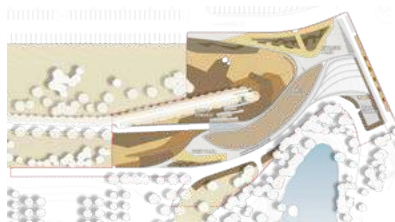
- Architect: Weiss/Manfredi
- Structural & Civil: Weidinger Associates
- MEP: Jaros, Baum & Bolles Consulting
- Lighting: Brandston Partnership
- Sustainability: Viridian Energy & Environmental
- General Contractor: EW Howell
- Construction Manager: LIRO
- Landscape Contractor: Kelso Landscape
- Arborist: Ecological Landscape Management

**LEED GOLD CERTIFICATION**

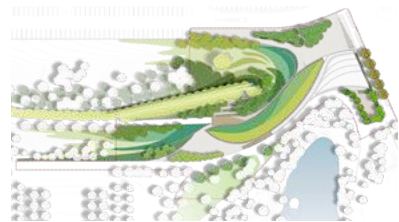




Stormwater Management



Soils



Planting

The sculpted landscape functions as a sophisticated stormwater management system, combining horticultural and architectural features with the living roof and engineered soils that together will retain stormwater run-off up to a 50 year storm event onsite and help sustain the Visitor Center plantings as well as other exhibit areas of the garden.

4 Fall 2013 - Ginkgo Allee and sculpted terraces merge with building roof 5 & 6 Vegetated Berm





7 Ginkgo Allee and living roof Summer 2012 8 Sculpted terraces 9 Terraces merge with pathway and storm water rill

**PUBLICATIONS**

Landscape Architect Magazine  
October 2013

GB&D (Green Building & Design)  
March / April 2013

Dwell  
April 2013

Huffington Post  
January 2013

Landscape Record  
2013

Landscape Architect & Specifier News  
November 2012

ENR New York  
November 2012

World Landscape Architect  
Summer 2012

Architectural Record  
Summer 2012

Architects Newspaper  
May 2012

Arch Daily  
May 2012

Green Roofs + Rooftop Gardens  
2012

**AWARDS**

2014 National AIA  
Honor Award

2014 ACEC New York  
Diamond Award

2013 ASLA National  
Honor Award

2013 ASLA New York  
Honor Award

2013 American  
Architecture Award The  
Chicago Athenaeum

2013 International  
Architecture Award The  
Chicago Athenaeum

2013 AIA New York State  
Design Award Citation

2013 MASTerworks Award:  
Best New Urban Amenity

2013 Building Brooklyn  
Award - National Award for  
Energy Efficiency

2012 Annual Design  
Review - Architect  
Magazine

2012 Green Good Design  
Award: Green Architecture,  
The Chicago Athenaeum

2012 Best Projects  
ENR New York

2012 Best New  
Architecture in New York -  
New York Observer

2012 Annual Design  
Review Award Architect  
Magazine

2009 Award for Design  
Excellence Public Design  
Commission

**MORE RECOGNITION**

"The visitor center is a tremendous achievement in its marriage of plant ecology and architecture... visually stunning in all four seasons, the diversity of plantings at the visitor center have a much deeper significance than immediately meets the eye: they help make this urban project a place to learn about ecological design, and expand Brooklyn Botanic Garden's renowned horticultural collections in important ways."

-Scot Medbury, President Brooklyn Botanic Garden

"The architecture and landscape are speaking the same language and are symbiotic, but it's more about the landscape than the building. A beautifully executed integration of architecture and landscape architecture that will only get better with time."

-2013 ASLA Awards Jury

"The landscape design's mastery is to be found in the way it manages to assert itself by providing a legible system of organization, while allowing for certain slippages to occur (most notably, between the urban and botanical)."

-Architect Magazine, July 2012